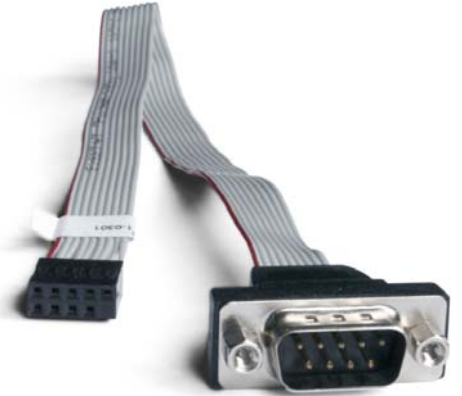


Shuttle XPC Accessory H-RS232 – Adapter für eine serielle Schnittstelle (RS232)

Mit Hilfe dieses Adapterkabels kann die serielle Schnittstelle (RS232) bei einigen Shuttle XPCs nachgerüstet werden. Hierbei wird im Backpanel eine Sub-D-Buchse eingebaut, die mit der seriellen Schnittstelle auf dem Mainboards verbunden wird.

**XPC Accessory
H-RS232**



Spezifikation	
Lieferumfang	- Adapter - Installationsanleitung
Anschlüsse	- Extern: Sub-D, 9-polig, männlich - Intern: 10-Pin (2x5), weiblich, 2,54mm Raster
Kabel	- 9-pol. Flachbandkabel - 32cm Länge
Kompatible XPC-Modelle	Dieses Zubehör ist kompatibel mit den Shuttle XPCs SH67H3, SH67H7 und SH61R4.
Bestell-Nr.	POC-PC0701



Bestell-Nr.: POC-PC0701

Installation Guide for H-RS232

Caution: For safety reasons, please ensure that the power cord is disconnected before opening the case!

- 1 Unscrew three thumbscrews of the case cover.



- 2 Slide the cover backwards and upwards.



- 3 Please look for a suitable perforation on the backpanel that allows for installation of a D-Sub connector.



- 4 Push the perforation gently to the inside using a screwdriver. Then bend the perforation back and forth until it can be fully removed.



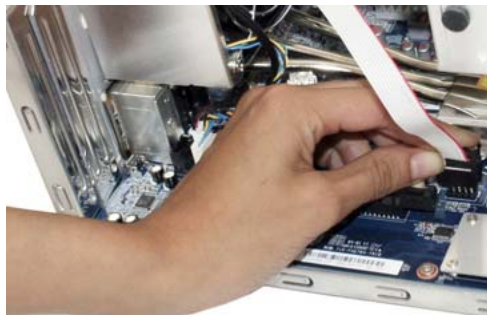
- 5 Undo the two hexagon screws of the D-Sub adapter.



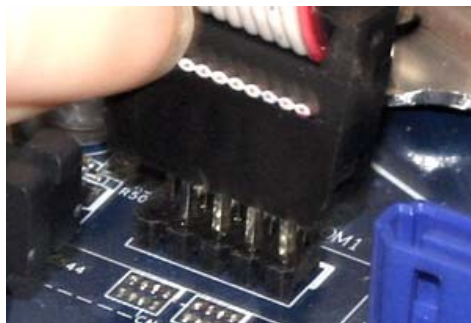
- 6 Slide the D-Sub connector from inside the case into the opening on the backpanel and affix it using the two hexagon screws.



- 7 Connect the other end of the adapter with the serial interface on the mainboard which is marked as "COM1".



- 8 Make sure that the marked lead of the ribbon cable and the marking on the mainboard are on the same side.



- 9 Proceed with further hardware installations, if required. Put the case cover back on and affix it using the three thumbscrews.

- 10 Power on the PC and press the "Delete" key on the keyboard when the message "Press DEL to run Setup" is prompted. First select the "Advanced" tab in the BIOS setup screen, then go to "Super IO Configuration" in the left frame of the screen. Now enter the "Serial Port Configuration" and make sure the serial port is set to "enabled". To "Save & Exit" the BIOS setup, press F4 on the keyboard.

