

**Overview**

Bandwidth: 500MHz  
 OD: 1.85\*6.1mm  
 Conductor: 32AWG  
 Approvals: RoHS  
 Connector: 3U" gold plated RJ45 connector

**Physical Characteristics**

- Cable Type – Cat6A STP
- Connector Type(s) – Gold Plated Shielded 8P8C (RJ45)
- Wiring Scheme – T568A or T568B
- Temperature Rating – -20°C to +75°C
- Voltage Rating – 30V

**Conductor (Qty. 4 twisted pair)**

- Conductor Type – 32AWG(7/0.08), Stranded Bare Copper
- Insulation – HDPE
- Diameter – 0.6±0.05mm
- Pair Identification:
  - Pair1=Orange, Orange-White
  - Pair2=Blue, Blue-White
  - Pair3=Green, Green-White
  - Pair4=Brown, Brown-White

**Connector Type (Qty. 2)**

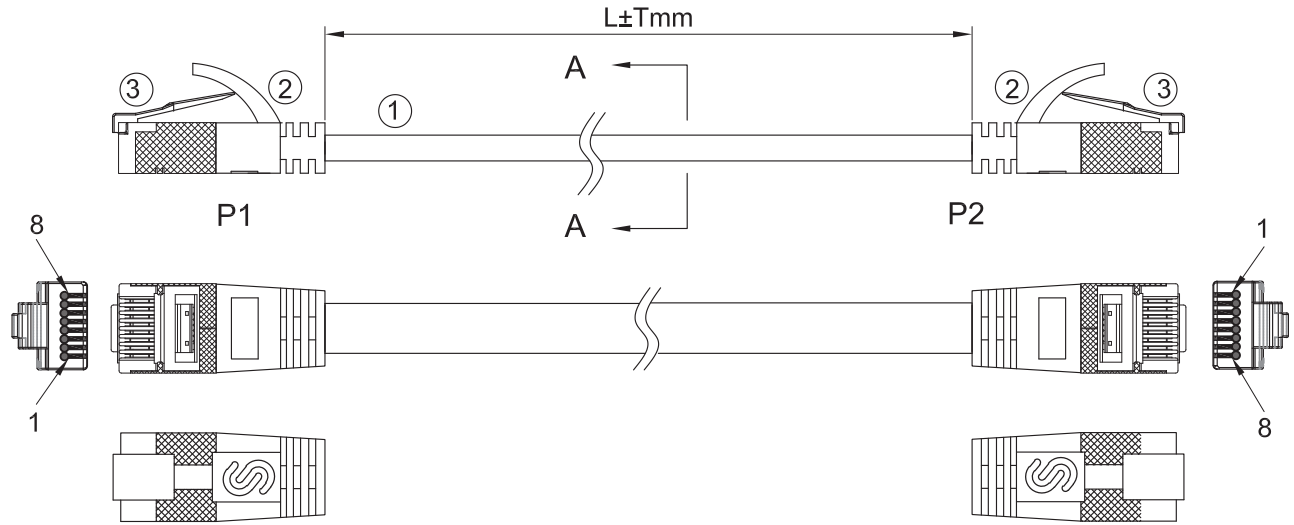
- Connector Type – Shielded 8P8C (RJ45)
- Gender – Male
- Connector Material – PC
- Contact Material – Copper Alloy, Gold Plating – 3µm

**Overall Cable**

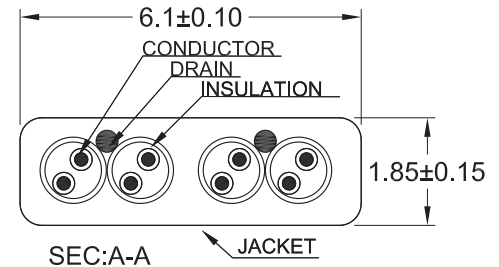
- Jacket – PVC
- Minimum Average Thickness – 0.51mm
- Outer Diameter – 1.85±0.15\*6.1±0.2mm

**Electrical Characteristics**

- Conductor DC Resistance – 15.2Ω/100m (maximum)
- Impedance – 100Ω
- Capacitance – 5600pf/100m
- Propagation Delay – 545ns/100m (maximum)
- Delay Skew – 45ns/100m (maximum)
- support 10Gb/s transfer rate and 65% shielded
- DSX 5000 Fluke Channel test(random test)



P1	P2	
1	1	WHITE/ORANGE
2	2	ORANGE
3	3	WHITE/GREEN
6	6	GREEN
4	4	BLUE
5	5	WHITE/BLUE
7	7	WHITE/BROWN
8	8	BROWN
S	S	SHIELDED



NO.	SPECIFICATION	Q'TY
3	RJ45 PLUG: 8P8C 3U" GOLD PLATED TWO PIECES SHORT BODY PLUG; GOLD PLATED SHIELDED.	
2	MOLDED: PVC MOLDED BOOT .	
1	CABLE: CAT.6A STP 4P/32AWG(7/0.08 BC)+DRAIN(7/0.08BC)*2 OD=1.85±0.15*6.1±0.15mm PVC JACKET.	
BOM LIST		

ITEM NO:	FLAT CAT6A STP PATCH CORD			DRAWER DATE	20180714
TITLE				CHECKED DATE	20180714
CUSTOMER				APPROVED DATE	
MATERIAL	SCALE				
REV.	A	UNIT	MM		
DRAWING NO:					
ACAD FILE	E:\				