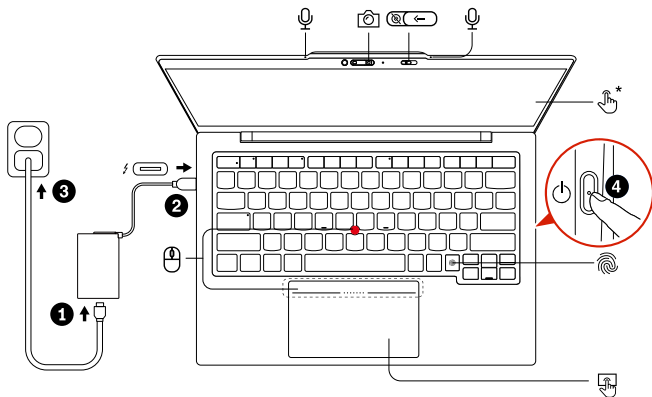


Lenovo
ThinkPad X1

ThinkPad X1 Carbon Gen 13

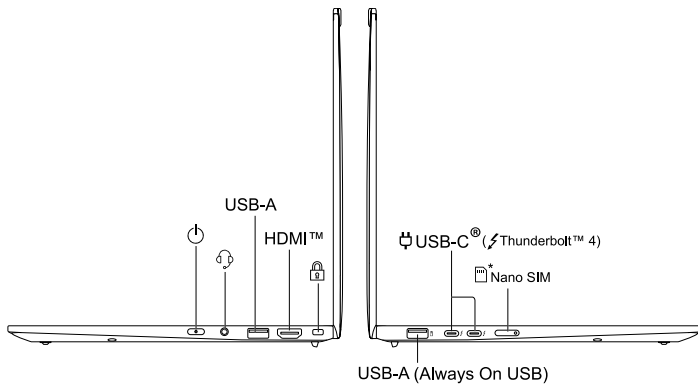
Lenovo

Get started



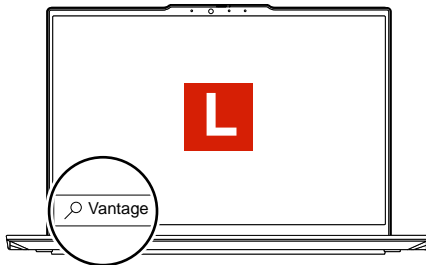
* For selected models | For selected models | For selected models | For selected models | For selected models

Sideview



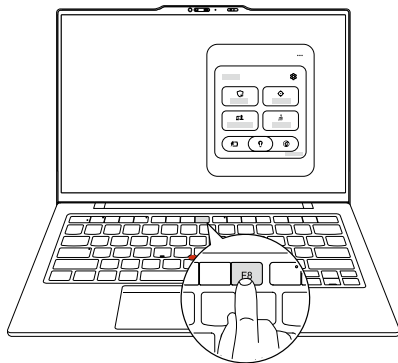
Read the statement on USB transfer rate in the *User Guide*. To access the *User Guide*, refer to methods mentioned on the back cover.

Lenovo Commercial Vantage*



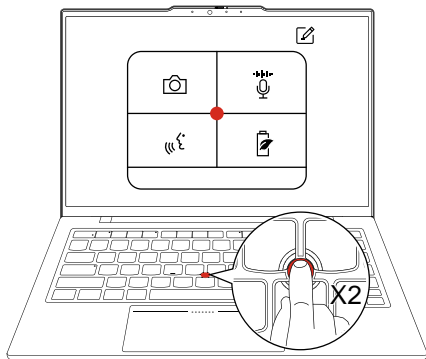
Access Commercial Vantage to adjust device settings and check for system updates.

Smart Modes*



Launch Smart Modes widget by pressing F8 to activate modes for different scenarios.

TrackPoint Quick Menu



Launch TrackPoint Quick Menu by double tapping¹ for quick configuration of some device settings.

¹ It can be set to single tapping. | It can be set to single tapping. | It can be set to single tapping. | It can be set to single tapping. | It can be set to single tapping.

[English]

Specific absorption rate (SAR)

YOUR DEVICE MEETS INTERNATIONAL GUIDELINES FOR EXPOSURE TO RADIO WAVES.

Refer to the following for 10g SAR limit and maximum reported SAR values:

10g SAR limit: 2 W/kg (body-worn SAR); 4 W/kg (limb SAR)

Maximum SAR with 0 mm separation distance: 0.55 W/kg (body-worn SAR); 0.55 W/kg (limb SAR)

For more information about SAR, refer to the *Safety and Warranty Guide* that came with your device.

European Union (EU) / United Kingdom (UK) — radio frequency and power

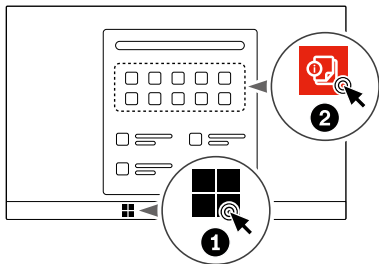
This radio equipment operates with the following frequency bands and maximum radio-frequency power:

Technology	Frequency [MHz] / band	Maximum transmit power
WLAN 802.11b/g/n/ax/be Bluetooth BR/EDR/LE	2400 - 2483.5	< 20 dBm
WLAN 802.11a/n/ac/ax/be	5150 - 5350; 5470 - 5725	< 23 dBm
WLAN 802.11a/n/ac/ax/be	5725 - 5875	< 13.98 dBm
WLAN 802.11ax/be	5945 - 6425	< 23 dBm

Note: Not all wireless bands may be enabled depending on your product configuration. Usage of this device is limited to indoor locations in the bands 5150 - 5350 MHz and 5945 - 6425 MHz.

Access User Guide

Access User Guide | Access User Guide | Access User Guide | Access User Guide | Access User Guide



First Edition (November 2024)

© Copyright Lenovo 2024

LIMITED AND RESTRICTED RIGHTS NOTICE: If data or software is delivered pursuant to a General Services Administration "GSA" contract, use, reproduction, or disclosure is subject to restrictions set forth in Contract No. GS-35F-05925.

Lenovo, Lenovo logo, ThinkPad, and ThinkPad logo are trademarks of Lenovo. Intel and Thunderbolt are trademarks of Intel Corporation or its subsidiaries in the U.S. and/or other countries. The terms HDMI and HDMI High-Definition Multimedia Interface are trademarks or registered trademarks of HDMI Licensing LLC in the United States and other countries. USB-C® is a registered trademark of USB Implementers Forum. All other trademarks are the property of their respective owners.



Reduce
Reuse
Recycle

For FSC Mix logo only